

12280

CHESAPEAKE BAY

Scale 1:200,000 at Lat. 38°10'

North American Datum of 1983

World Geodetic System 1984

SOUNDINGS IN FEET

At Mean Lower Low Water

NOAA WEATHER RADIO BROADCASTS

The NOAA Weather Radio stations listed below provide continuous weather broadcasts. The reception range is typically 20 to 40 nautical miles from the station site, but can be as high as 100 nautical miles for stations at high elevations.

Station	Frequency	Power
Baltimore, MD	162.400 MHz	100 W
Washington, DC	162.500 MHz	100 W
Hampton, VA	162.400 MHz	100 W
Norfolk, VA	162.500 MHz	100 W
Salisbury, MD	162.475 MHz	100 W
Salisbury, MD	162.500 MHz	100 W

CAUTION

Transfer changes or defects to aids to navigation are not indicated on this chart. See Notice to Mariners.

During some winter months when ice is encountered by ice, certain aids to navigation are replaced by other types or removed. For details see U.S. Coast Guard Light List.

CAUTION

Support channels shown by broken lines are subject to changing, particularly by tides.

SMALL CRAFT WARNINGS

During low boating seasons, small-craft warnings will be displayed from sunrise to sunset on the Chesapeake Bay and Potomac Rivers within the Maryland and Virginia portions of the Chesapeake Bay and tributaries.

CAUTION

Limitations on the use of radio signals as aids to navigation can be found in the U.S. Coast Guard Light List and National Geospatial Intelligence Agency Publication 1-17. Radio direction finder bearings to compasses should be used with caution. For more information, contact the local department of natural resources.

TIDE INFORMATION

NAME	PLACE	SLYSLNO	Mean High Water	Mean Low Water
Potomac River	Washington, D.C.	12073	1.2	0.2
Chesapeake Bay	Annapolis, MD	12074	1.1	0.1
Chesapeake Bay	Baltimore, MD	12075	1.0	0.0
Chesapeake Bay	Washington, DC	12076	1.0	0.0
Chesapeake Bay	Hampton, VA	12077	1.0	0.0
Chesapeake Bay	Norfolk, VA	12078	1.0	0.0

CHESAPEAKE BAY BRIDGES

CHESAPEAKE CHANNEL SPANS

EASTERN CHANNEL SPANS

NO DISCHARGE ZONE

RESTRICTED AREA

CAUTION

NO DISCHARGE ZONE

NOTE A

NO DISCHARGE ZONE

NOTE B

NO DISCHARGE ZONE

NOTE C

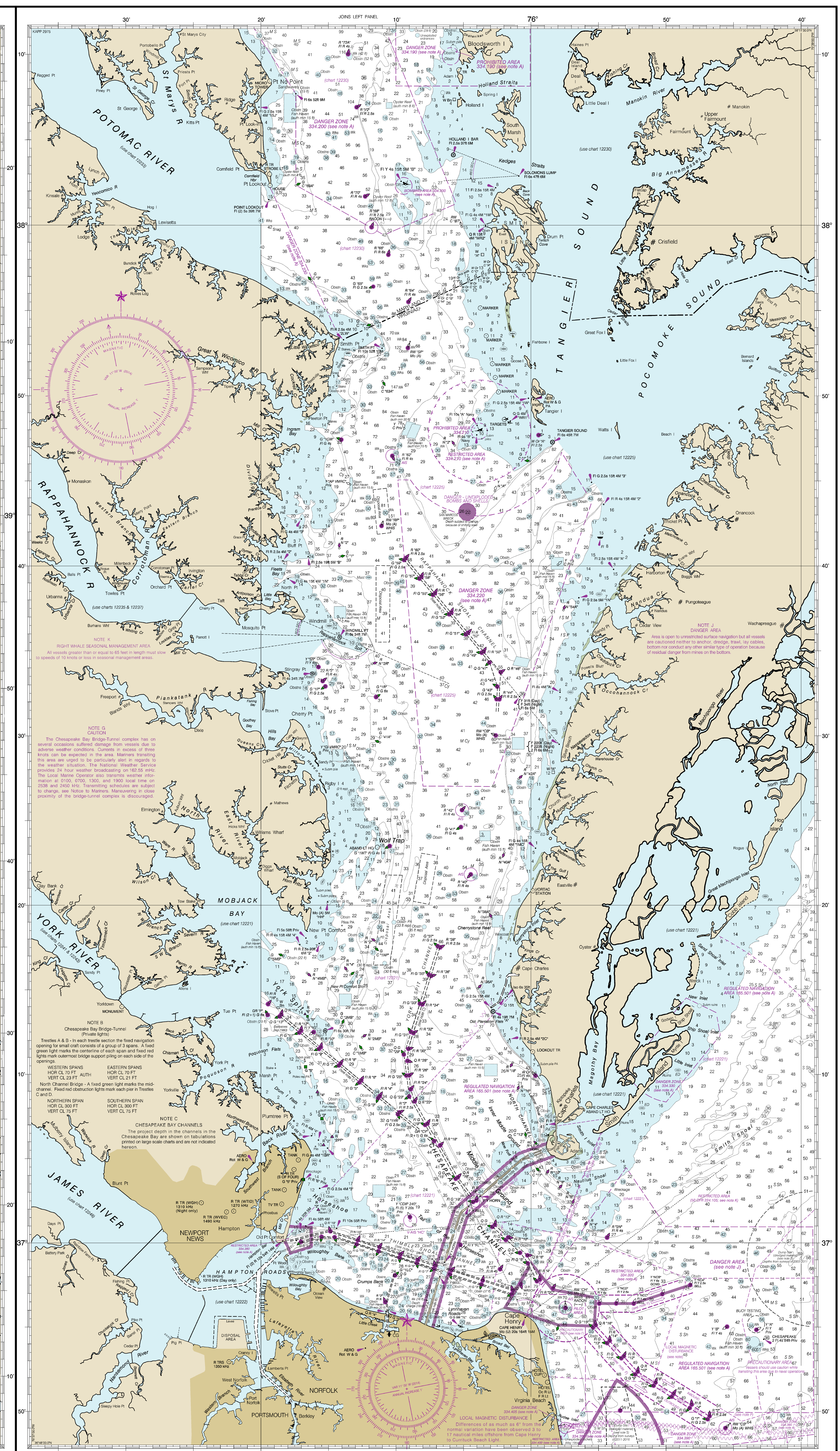
NO DISCHARGE ZONE

NOTE D

NO DISCHARGE ZONE

NOTE E

NO DISCHARGE ZONE



12280

CHESAPEAKE BAY

Scale 1:200,000 at Lat. 38°10'

North American Datum of 1983

World Geodetic System 1984

SOUNDINGS IN FEET

At Mean Lower Low Water

NOAA WEATHER RADIO BROADCASTS

The NOAA Weather Radio stations listed below provide continuous weather broadcasts. The reception range is typically 20 to 40 nautical miles from the station site, but can be as high as 100 nautical miles for stations at high elevations.

Station	Frequency	Power
Hampton, VA	162.400 MHz	100 W
Norfolk, VA	162.500 MHz	100 W
Portsmouth, VA	162.475 MHz	100 W
Portsmouth, VA	162.500 MHz	100 W

CAUTION

Transfer changes or defects to aids to navigation are not indicated on this chart. See Notice to Mariners.

During some winter months when ice is encountered by ice, certain aids to navigation are replaced by other types or removed. For details see U.S. Coast Guard Light List.

CAUTION

Support channels shown by broken lines are subject to changing, particularly by tides.

SMALL CRAFT WARNINGS

During low boating seasons, small-craft warnings will be displayed from sunrise to sunset on the Chesapeake Bay and Potomac Rivers within the Maryland and Virginia portions of the Chesapeake Bay and tributaries.

CAUTION

Limitations on the use of radio signals as aids to navigation can be found in the U.S. Coast Guard Light List and National Geospatial Intelligence Agency Publication 1-17. Radio direction finder bearings to compasses should be used with caution. For more information, contact the local department of natural resources.

TIDE INFORMATION

NAME	PLACE	SLYSLNO	Mean High Water	Mean Low Water
James River	Newport News, VA	12079	1.0	0.0
Chesapeake Bay	Hampton, VA	12080	1.0	0.0
Chesapeake Bay	Norfolk, VA	12081	1.0	0.0
Chesapeake Bay	Portsmouth, VA	12082	1.0	0.0

CHESAPEAKE BAY BRIDGES

CHESAPEAKE CHANNEL SPANS

EASTERN CHANNEL SPANS

NO DISCHARGE ZONE

RESTRICTED AREA

CAUTION

NO DISCHARGE ZONE

NOTE A

NO DISCHARGE ZONE

NOTE B

NO DISCHARGE ZONE

NOTE C

NO DISCHARGE ZONE

NOTE D

NO DISCHARGE ZONE

NOTE E

NO DISCHARGE ZONE